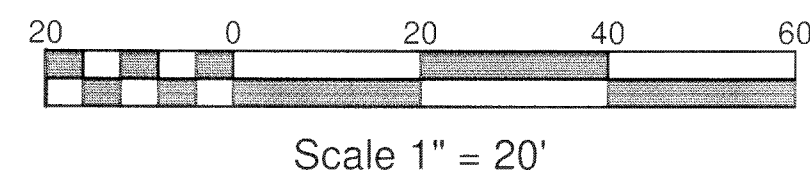
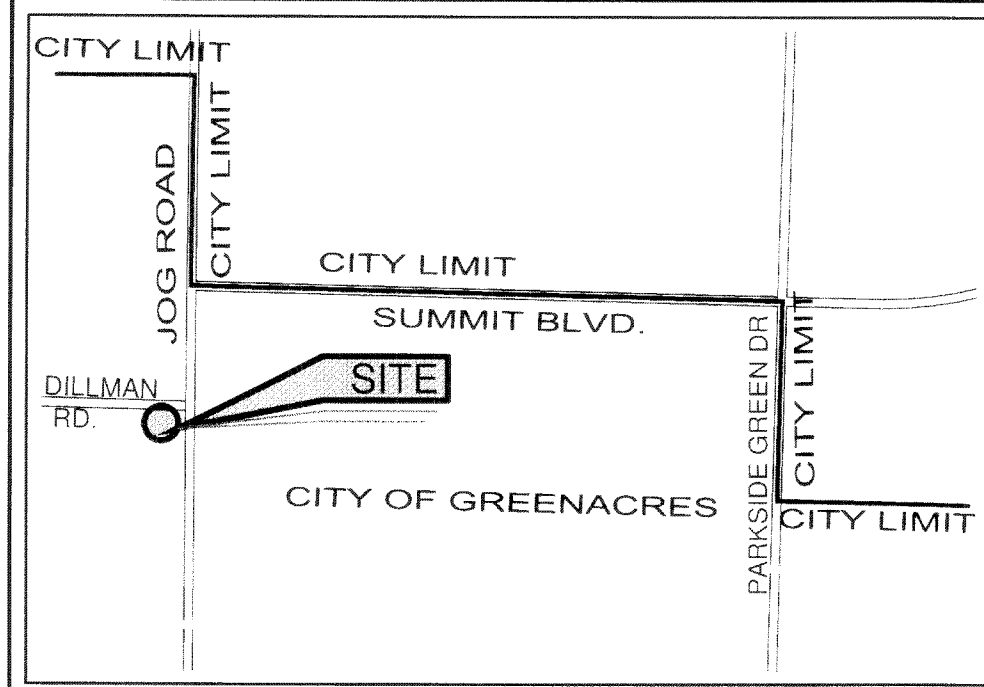


KID'S COLLEGE-GREENACRES CAMPUS

BEING A REPLAT OF A PORTION OF TRACT 1, BLOCK 14, PALM BEACH FARMS CO., PLAT NO. 3, RECORDED IN PLAT BOOK 2, PAGE 45, PUBLIC RECORDS OF PALM BEACH COUNTY, FLORIDA, LYING IN SECTION 10, TOWNSHIP 44 SOUTH, RANGE 42 EAST, CITY OF GREENACRES, PALM BEACH COUNTY, FLORIDA.

SHEET 2 OF 2

PLAT OF
"DILLMAN ROAD"
(P.B. 83, PG. 80)



79

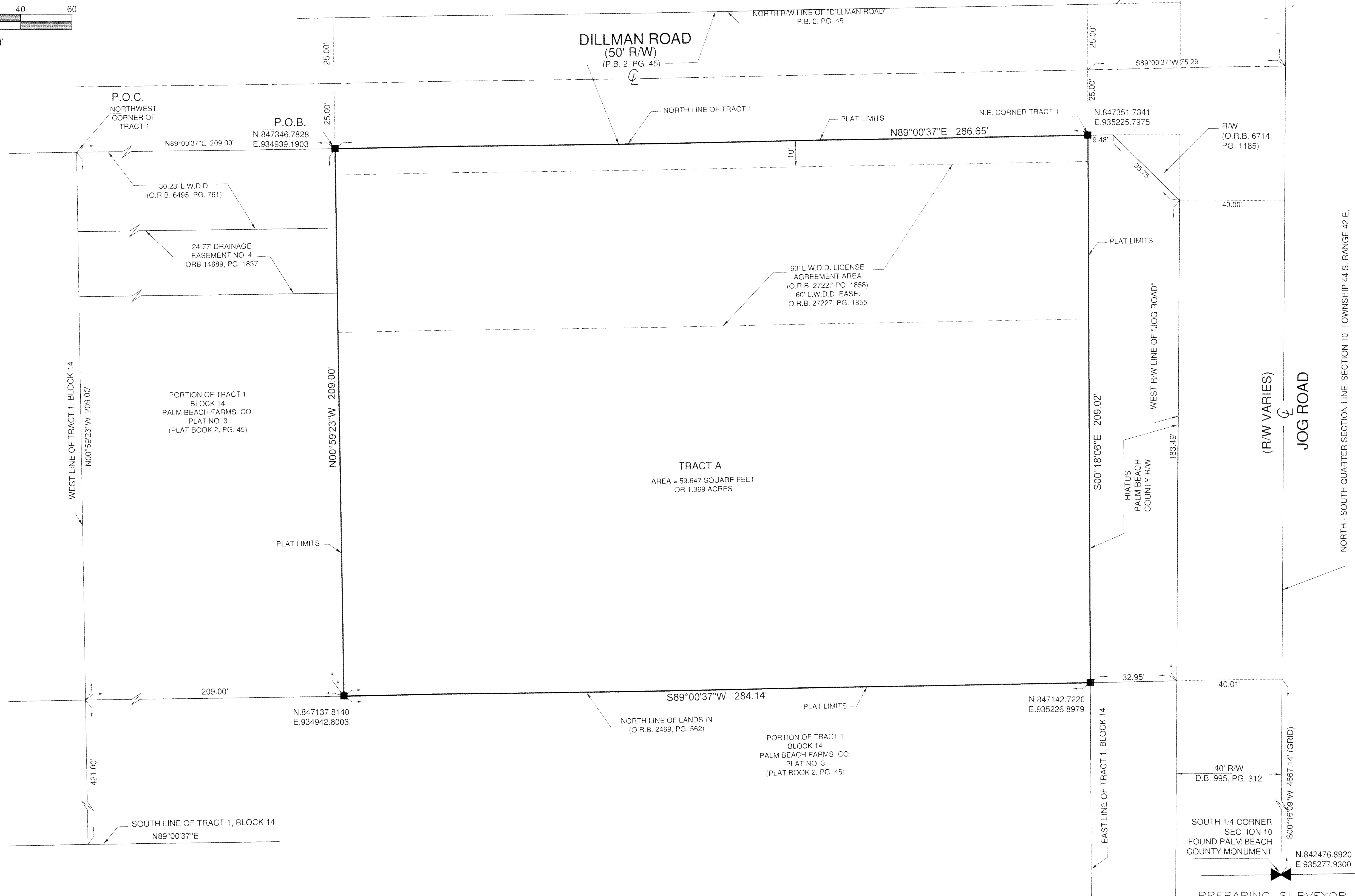
STATE OF FLORIDA
COUNTY OF PALM BEACH

THIS PLAT WAS FILED FOR RECORD AT _____ M. THIS _____ DAY OF _____ 20____ AND DULY RECORDED IN PLAT BOOK No. _____ ON PAGE _____

SHARON R. BROCK
CLERK & COMPTROLLER
PALM BEACH COUNTY

BY: _____
DEPUTY CLERK

SHEET 2 OF 2



LEGEND:

	= SET P.C.P., P.K. NAIL & DISC STAMPED "MLS" LB # 6838		(D) = DEED		(M) = MEASURED		P.R.M. = PERMANENT REFERENCE MONUMENT
	= SET PERMANENT REFERENCE MONUMENT (P.R.M.) 4" X 4" CONCRETE MONUMENT STAMPED "M.L.S., L.B.#6838"		(D.B.) = DEED BOOK		(O.R.B.) = OFFICIAL RECORD BOOK		R.W. = RIGHT OF WAY
	= CENTRAL ANGLE		(D.E.) = DRAINAGE EASEMENT		(P.B.) = PLAT BOOK		U.E. = UTILITY EASEMENT
	= CENTERLINE		(EASE.) = EASEMENT		(P.B.C.) = PALM BEACH COUNTY		
			(F.D.) = FOUND		(PG.) = PAGE		
			(L) = ARC LENGTH		(P.C.N.) = PROPERTY CONTROL NUMBER		
			(L.A.E.) = LIMITED ACCESS EASEMENT		(P.O.B.) = POINT OF BEGINNING		
			(L.W.D.D.) = LAKE WORTH DRAINAGE DISTRICT		(P.O.C.) = POINT OF COMMENCEMENT		

PREPARING SURVEYOR & MAPPER'S STATEMENT
THIS INSTRUMENT WAS PREPARED BY MICHAEL J. MILLER, P.S.M. 4034
IN THE OFFICE OF MILLER LAND SURVEYING, 1121 LAKE AVE., LAKE WORTH, FL 33460

SCALE: 1" = 20'	MILLER LAND SURVEYING 1121 LAKE AVENUE LAKE WORTH, FLORIDA 33460 PHONE: (561) 589-2689 - FAX: (561) 582-0151 www.millersurveying.com e-mail: orders@millersurveying.com	REF: R49.29
DRAWN BY: PICARD		PREV: Y170849
FIELD WK: M.M. B.M.		JOB NO: Y180618
DATE: 08/06/2018		L - 2045 - A